

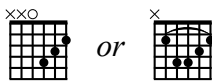
# The Best Day

Taylor Swift

## Chords



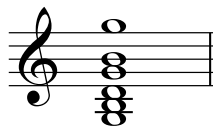
D



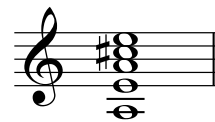
Bm



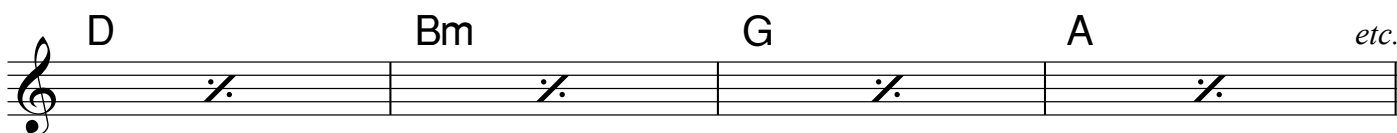
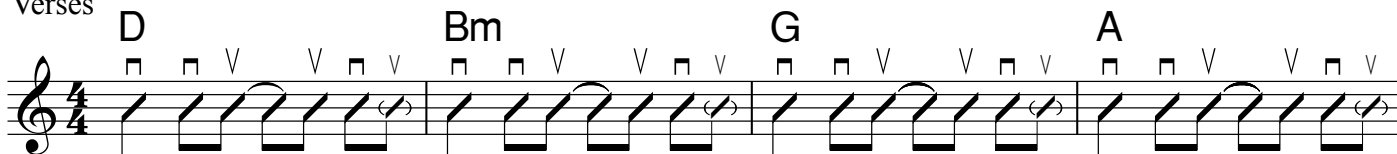
G



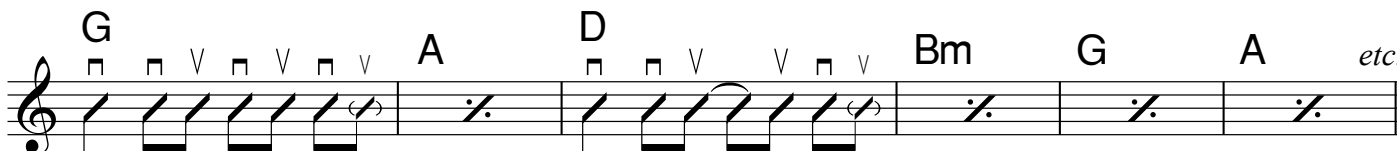
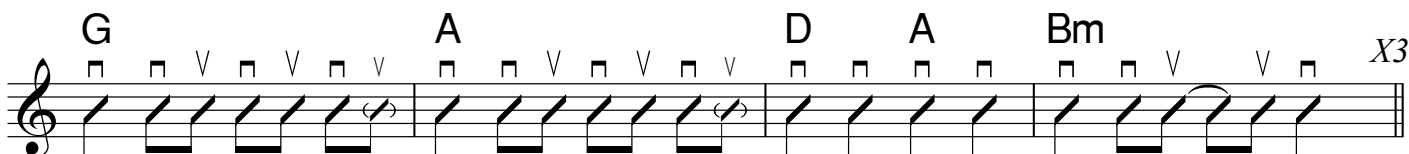
A



## Verses



## Chorus



### Handy hints

The B minor chord sounds best as a bar-chord but you can use the easy version if you need to. Bar-chords are really hard at first, especially if you are playing an acoustic guitar. Practice them for just a few minutes at a time until your hand develops the extra strength needed. To learn more about them refer to pages 34 - 35 in *Modern Guitar Chord Styles, Volume I*.

*The Best Day* is a good example of a 'turnaround' chord progression. These are a type of progression that are commonly used in Pop and there are several variations that are useful. To learn *more* about turnarounds check out pages 22 - 23 in *MGCS I*

This arrangement and typesetting © Modern Guitar Tuition 2011  
 For more great guitar tips and song charts go to [www.modernguitartuition.com](http://www.modernguitartuition.com)

**Disclaimer:** This information serves only as a basic guide to the guitar accompaniment part for this song. This free chart is not a complete version of this song and is intended purely for the guitar education of the present user.