

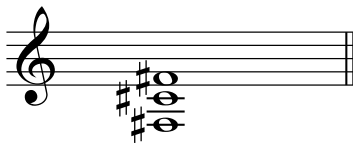
Born This Way

Lady Gaga

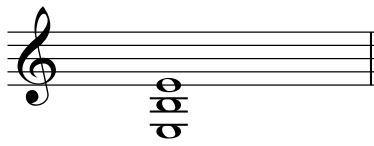
Chords



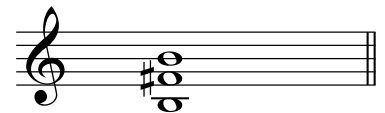
F#5



E5

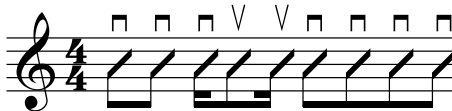


B5



Intro

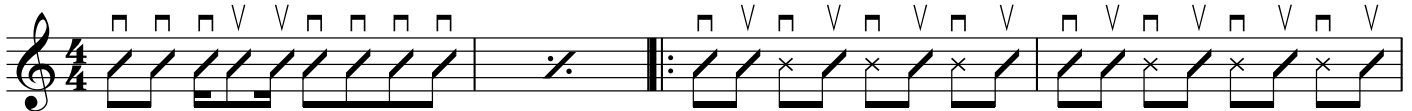
B5



Verses

F#5

E5



Chorus

B5

F#5

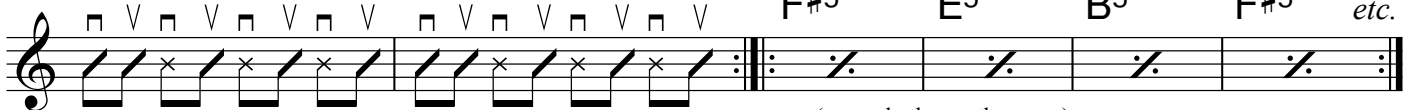
F#5

E5

B5

F#5

etc.



(same rhythm as the verse)

Handy hints

Three-string power-chords give a stronger tone; professionals favour these forms. It is best to use a finger on each note in F#5 and B5 - this gives you more control of the sound. For the E5 form place the pad of the index finger flat on 4th & 5th strings (2nd fret). The heavy disco rhythm that is a feature of Born This Way needs to be played with the down & up strokes exactly as written; this creates the accenting you hear on the recording. To learn more about power-chords and the full bar-chords they belong to, check out pages 4 - 9 of *Modern Guitar Chord Styles, Volume 2*

This arrangement and typesetting © Modern Guitar Tuition 2011
 For more great guitar tips and song charts go to www.modernguitartuition.com

Disclaimer: This information serves only as a basic guide to the rhythm guitar accompaniment part for this song. It is not a complete chart and is intended purely for the guitar education of the present user.